



AquaBox Variable Speed

A COMPACT SYSTEM DESIGNED FOR TRANSPORTING CLEAN WATER.

Using a variable frequency drive for constant pressure systems, which automatically controls the speed of the pump while keeping the pressure in the system constant.

Southern Pumps Ltd

AquaBox System

Compact design, Constant pressure

The all in one AquaBox System for Domestic and Commercial clean water applications. A compact system designed for transporting clean water with constant pressure. The AquaBox System makes plumbing easy, with less work, creating more space and less noise for greater comfort. A cost effective plug n'play system from Southern Pumps Ltd

Components

- 340 Litr & 530 Litr Cylindrical tanks
- 340 Litr, 500 Litr, 900 Litr & 1100 Litr Rectangular tanks
- Lowara SC205 Stainless Steel Submersible Scuba Pump
- Variable Frequency Drive
- Ball Valve & Float
- 1" FM LA Ballvalve

Please Note: Overflow connection not supplied

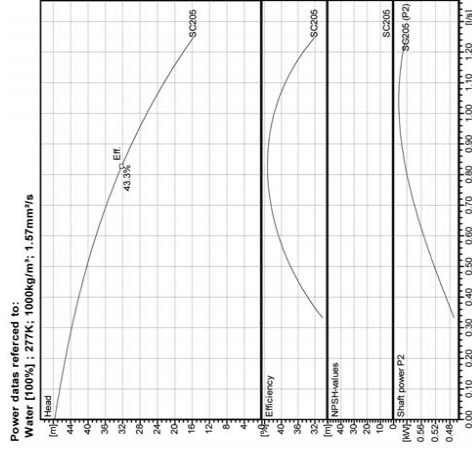
AquaBox Variable Speed

The AquaBox Variable Speed allows a constant set pressure regardless of demand for maximum comfort. Energy savings are the result of the precise speed control.

The Variable Speed Drive is specially designed for maintaining constant pressure independent of flow for maximum comfort. Energy savings is the result of the precise speed control. Top quality components guaranteed high reliability and a trouble-free life. The inverter has inbuilt protection against various system and electrical faults. Smooth operation and soft starting ensure silent running and an extended pump life. With the Variable Speed Controller pipe mounted and quick set-up, this gives you easy installation.

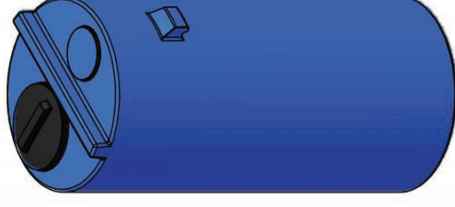
Pipe mounted version:

- Turns a fixed speed pump to a variable speed
- Easy to setup and operate, just select the required "Plug and Play"
- Built in dry run protection
- Compact design
- Built in pressure transducer with digital indicator
- Control and panel with LCD display
- Stored information of operated hours, number of starts, connections to the power supply, register of alarms
- Built in protection of over current, incorrect supply voltage and short circuit
- Anti-icing protection >> just for water cooled version
- IP55

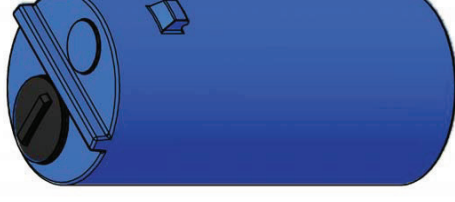


Tank Dimensions

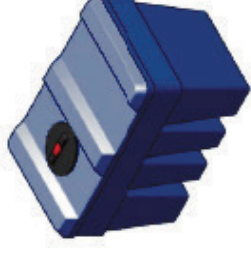
Dimensions in mm



Capacity 340 Litre
Height 1371
Diameter 582
Width 656
including handles



Capacity 530 Litre
Height 1246
Diameter 776



Capacity 300 Litre
Height 710
Width 664
Length 1029



Capacity 340 Litre
Height 604
Width 553
Length 1615



Capacity 500 Litre
Height 803
Width 728
Length 1201



Capacity 900 Litre
Height 1053
Width 660
Length 1750

Tank Details

The Tanks is manufactured from medium density recyclable polyethylene with UV light stabilizer for outdoor endurance, they are compact and strong. The Tanks light weigh design makes for easy transportation and installation.

HIGH FLOW OPTIONS AVAILABLE ON REQUEST