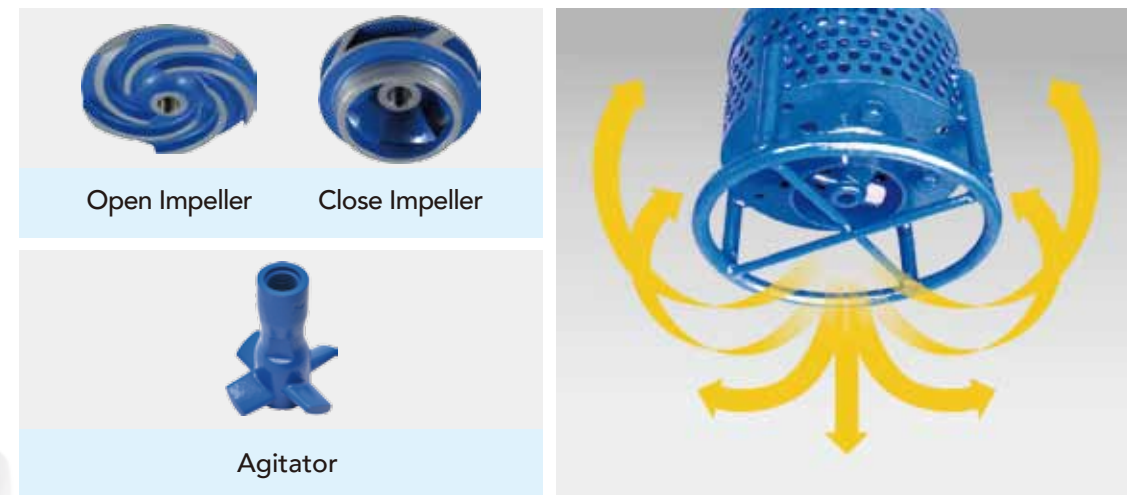


# HDG



## FEATURES

- Designed for construction and civil engineering applications: its easy portability, double outer casing and water cooling motor make it possible to run the pump in low water levels.
- The pumps are durable and leakproof structure with automatic resetting motor protection and double mechanical seals made of silicon carbide.
- The internal casting is coated with High Solid Epoxy coating to prolongs metals from corrosion and oxidation.
- Harden and abrasion resistant impeller that is made of high chrome alloy (HiCrFC) steel with a hardness of 55-60 Rockwell.
- The pumps are equipped with a ductile cast iron (FCD-700) agitator to create powerful stirring and pumping action for slurry.

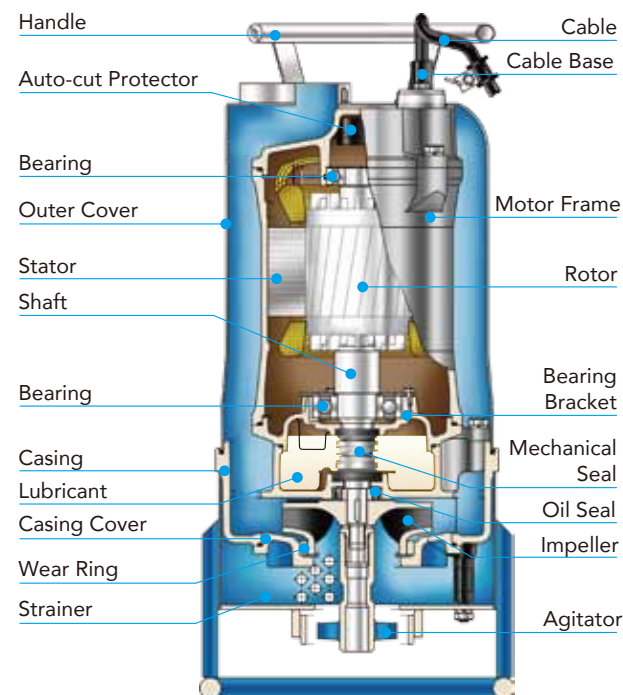


## APPLICATIONS

- Civil engineering, dewatering of tunneling, ground works, mining and manhole sewer.
- Industrial dewatering or recycling fluids containing solid sediments for Gravel pit, Sand and Gravel plant.
- Mobile use for contractors, installers and industries.

## PRODUCT NOMENCLATURE

80	HDG	2	1.5
Discharge mm	Type	Pole	kW



## OPTIONAL OUTLET SET

Output HP(kW)	Discharge inch(mm)	Lower PCD*Holes	LOH Hose Connection	LOT Male Thread Connection	LOF Flange Connection	LKF Double Flange Set	LOC(A) Center Line Flange
2(1.5) 5(3.7)	2"(50)	98*4	LOH2-98	LOT2-98	LOF2-120-125*98	LKF2-120*98	-
	3"(80)	98*4	LOH3-98	LOT3-98	LOF3-150-160*98	LKF3-150*98	LOC3-150*98
	4"(100)	98*4	LOH4-98	LOT4-98	LOF4-175-190*98	LKF4-175*98	-
7.5(5.5) 10(7.5)	3"(80)	127*4	LOH3-127	LOT3-127	LOF3-150-160*127	LKF3-150*127	LOC3-150*127
	4"(100)	127*4	LOH4-127	LOT4-127	LOF4-175-190*127	LKF4-175*127	-
	6"(150)	127*4	LOH6-127	LOT6-127	LOF6-240*127	LKF6-240*127	-
15(11) 20(15) 30(22)	4"(100)	145*4	LOH4-145	LOT4-145	-	-	LOC4-175*145
	6"(150)	145*4	LOH6-145	LOT6-145	-	-	LOC6-240*145
	6"(150)	185*5	LOH6-185	LOT6-185	-	-	LOC6-240*185

## PRODUCT NOMENCLATURE

LOH 4 - 98  
Type Discharge PCD

LOF 4 - 175 - 190 \* 98  
Type Discharge PCD PCD  
(upper flange) (lower flange)

## PRODUCT FEATURES

	<b>Epoxy Cable Base</b> An epoxy resin seal cable base prevents moisture from entering the motor through the core wires.		<b>Double Mechanical Seal</b> Superior abrasion resistant mechanical seal manufactured with silicon carbide to ensure the best seal effect.
	<b>Auto-cut Protector</b> Automatic On/Off motor protector to prevent motor burn out due to high temperature and excess amperage draw.		<b>High Efficiency Dry Motor</b> All stator coils need to be treated with insulating varnish procedure to achieving the best insulation, efficiency and durability.

**HCP** Professionalism • Innovation • Service • Commitment  
HCP PUMP MANUFACTURER CO., LTD.  
www.hcppump.com



Distributor: \_\_\_\_\_

We reserve the right to alter specifications of product at any time without giving prior notice.  
Copyright © 2019 HCP PUMP MANUFACTURER CO., LTD. All rights reserved.

DHDEN5-1912



**D**ewatering Pumps  
**HD/HDG/BD** 50Hz SERIES



# HD/BD

## FEATURES

- Designed for construction and civil engineering applications: its easy portability, double outer casing and water cooling motor make it possible to run the pump in low water levels.
- The pumps are durable and leakproof structure with automatic resetting motor protection and double mechanical seals made of silicon carbide.
- The internal casting is coated with High Solid Epoxy coating to prolongs metals from corrosion and oxidation.
- Multi-impeller design with High Chrome Alloy steel (HiCrFC) impeller, wear plate and wear rings with a hardness of 55 - 60 Rockwell. It is the hardest and toughest impeller among the construction pump and against abrasion.
- The pumps are durable with Epoxy Resin Cable, IP68 waterproof structure, automatic resetting and double mechanical seal made of silicon carbide.

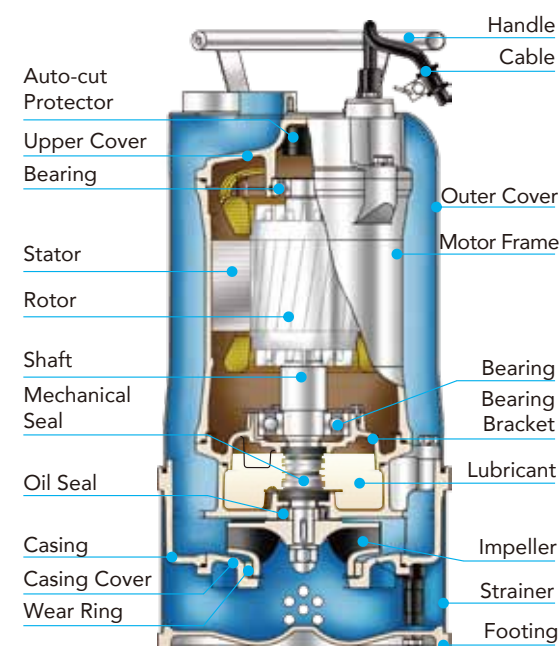


## APPLICATIONS

- Civil engineering, dewatering, tunneling, ground works, mining and manhole sewer.
- Industrial wastewater dewatering or recycling fluids containing solid sediments for Gravel pit, Sand and Gravel plant.
- Mobile use for contractors, installers and industries.

## PRODUCT NOMENCLATURE

100	HD	2	5.5
Discharge mm	Type	Pole	kW

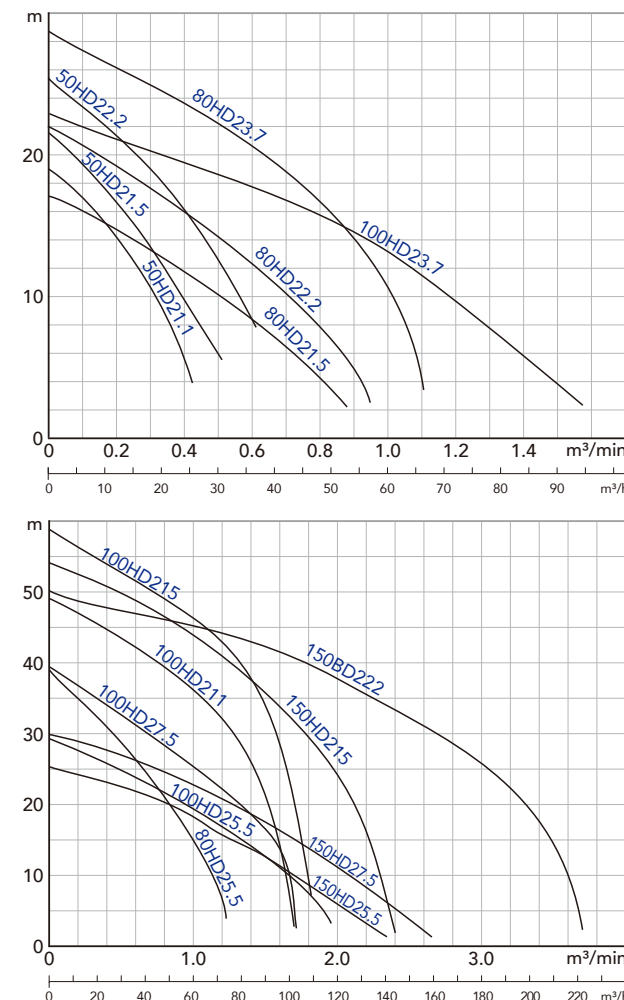


# HD/BD

## SUBMERSIBLE DEWATERING PUMPS



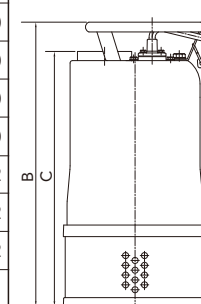
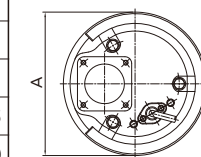
## PERFORMANCE CURVES



## PERFORMANCE SPECS.

Model	Output HP(kW)	Discharge Inch(mm)	Phase	Start Method	Head m	Standard		Solid Passage mm	Weight kg		Dimensions mm				
						m³/min	m³/h		1Ø	3Ø	A	B	C	3Ø	
50HD21.1	1.5(1.1)	2"(50)	1	Capacitor	13.5	0.2	12	7.5(3/4")	28	24	210	482	423	431	372
50HD21.5	2(1.5)	2"(50)	3	Direct	15	0.25	15	10(3/8")	40	36	235	511	466	465	421
50HD22.2	3(2.2)	2"(50)	3	Direct	19	0.3	18	10(3/8")	44	39	235	541	466	496	421
80HD21.5	2(1.5)	3"(80)	1	Capacitor	10	0.5	30	10(3/8")	40	36	235	511	466	465	421
80HD22.2	3(2.2)	3"(80)	3	Direct	14	0.5	30	10(3/8")	45	39	235	541	466	496	421
80HD23.7	5(3.7)	3"(80)	3	Direct	22	0.5	30	10(3/8")	-	44	235	-	496	-	451
100HD23.7	5(3.7)	4"(100)	3	Direct	13	1.0	60	10(3/8")	-	44	235	-	511	-	465
80HD25.5	7.5(5.5)	3"(80)	3	Direct	28	0.5	30	10(3/8")	-	72	286	-	610	-	550
100HD25.5	7.5(5.5)	4"(100)	3	Direct	19	1.0	60	10(3/8")	-	75	286	-	610	-	550
150HD25.5	7.5(5.5)	6"(150)	3	Direct	12	1.5	90	10(3/8")	-	78	286	-	610	-	550
100HD27.5	10(7.5)	4"(100)	3	Direct	25	1.0	60	10(3/8")	-	80	286	-	610	-	550
150HD27.5	10(7.5)	6"(150)	3	Direct	17	1.5	90	10(3/8")	-	81	286	-	610	-	550
100HD211	15(11)	4"(100)	3	Direct	36	1.0	60	10(3/8")	-	125	330	-	700	-	642
100HD215	20(15)	4"(100)	3	Direct	46	1.0	60	10(3/8")	-	134	330	-	700	-	642
150HD215	20(15)	6"(150)	3	Direct	35	1.5	90	10(3/8")	-	133	330	700	642	-	-
150BD222	30(22)	6"(150)	3	Direct	37	2	120	15(3/8")	-	224	403	813	721	-	-

Note : Weight Without Cable & Outlet.

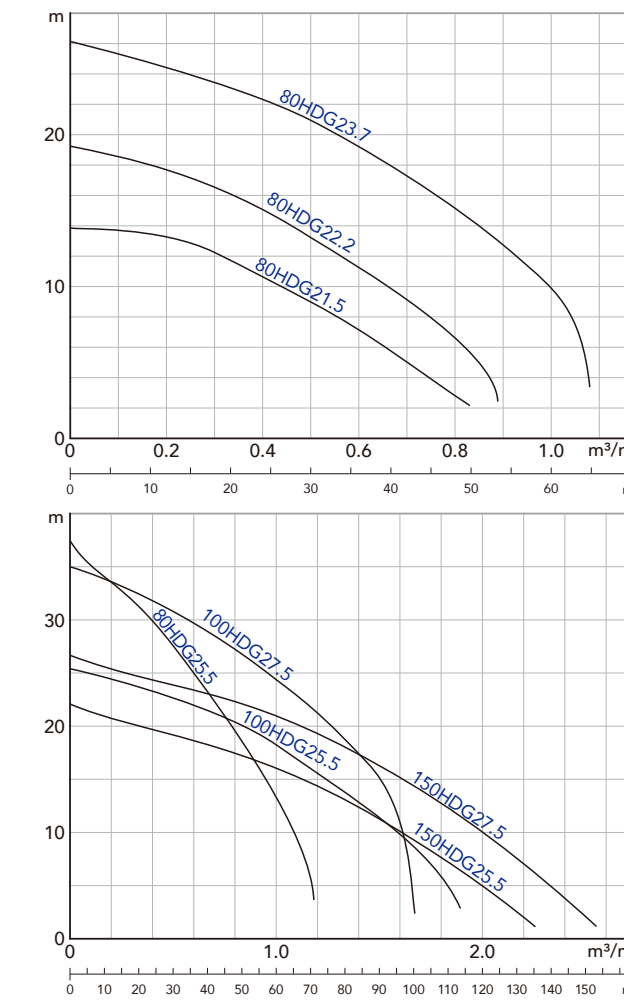


# HDG

## SUBMERSIBLE SLURRY DEWATERING PUMPS



## PERFORMANCE CURVES



## PERFORMANCE SPECS.

Model	Output HP(kW)	Discharge Inch(mm)	Phase	Start Method	Head m	Standard		Solid Passage mm	Weight kg		Dimensions mm				
						m³/min	m³/h		1Ø	3Ø	A	B	C	3Ø	
80HDG21.5	2(1.5)	3"(80)	1	Capacitor	9	0.5	30	10(3/8")	41	36	260	592	547	546	502
80HDG22.2	3(2.2)	3"(80)	3	Direct	13	0.5	30	10(3/8")	45	40	260	622	547	577	502
80HDG23.7	5(3.7)	3"(80)	3	Direct	21	0.5	30	10(3/8")	-	45	260	-	577	-	532
80HDG25.5	7.5(5.5)	3"(80)	3	Direct	27	0.5	30	10(3/8")	-	73	318	-	683	-	623
100HDG25.5	7.5(5.5)	4"(100)	3	Direct	18	1.0	60	10(3/8")	-	76	318	-	683	-	623
150HDG25.5	7.5(5.5)	6"(150)	3	Direct	11	1.5	90	10(3/8")	-	79	318	-	683	-	623
100HDG27.5	10(7.5)	4"(100)	3	Direct	24	1.0	60	10(3/8")	-	81	318	-	683	-	623
150HDG27.5	10(7.5)	6"(150)	3	Direct	16	1.5	90	10(3/8")	-	82	318	-	683	-	623

Note : Weight Without Cable & Outlet.

