

Group 02050

PP COUPLING



Code	Size	Bag	Box	Stock
02050120	16x16	20	280 P2	✓
02050010	20x20	20	160 P2	✓
02050020	25x25	10	80 P2	✓
02050030	32x32	10	60	✓
02050040	40x40	5	40 P2	✓
02050050	50x50	5	30 P3	✓
02050060	63x63	-	10 P2	✓
02050070	75x75	-	9 P2	✓
02050080	90x90	-	8 P3	✓
02050100	110x110	-	6 P4	✓

Group 02010

PP MALE ADAPTOR



Code	Size	Bag	Box	Stock
02010280	16x1/2"	20	480 P2	✓
02010290	16x3/4"	20	400 P2	✓
02010010	20x1/2"	20	280 P2	✓
02010020	20x3/4"	20	280 P2	✓
02010030	25x1/2"	10	160 P2	✓
02010040	25x3/4"	10	140 P2	✓
02010050	25x1"	10	140 P2	✓
02010270	32x1/2"	10	100 P2	✓
02010060	32x3/4"	10	100 P2	✓
02010070	32x1"	10	100 P2	✓
02010080	32x5/4"	10	100 P2	✓
02010090	40x1"	5	60 P2	✓
02010100	40x5/4"	5	60 P2	✓
02010110	40x6/4"	5	50 P2	✓
02010120	50x5/4"	5	30 P2	✓
02010130	50x6/4"	5	30 P2	✓
02010140	50x2"	5	30 P2	✓
02010150	63x6/4"	-	25 P3	✓
02010160	63x2"	-	25 P3	✓
02010170	63x2 1/2"	-	25 P3	✓
02010180	75x2"	-	12 P2	✓
02010190	75x2 1/2"	-	12 P2	✓
02010300	90x2"	-	14 P3	✓
02010310	90x2 1/2"	-	14 P3	✓
02010220	90x3"	-	14 P3	✓
02010320	90x4"	-	13 P3	✓
02010330	110x3"	-	7 P3	✓
02010260	110x4"	-	7 P3	✓

Group 02060

PP REDUCING COUPLING



Code	Size	Bag	Box	Stock
02060180	20x16	20	200 P2	✓
02060010	25x20	10	120 P2	✓
02060020	32x25	10	80 P2	✓
02060170	40x25	5	50 P2	✓
02060030	40x32	5	45 P2	✓
02060050	50x40	5	25 P2	✓
02060160	63x32	-	15 P2	✓
02060150	63x40	-	15 P2	✓
02060080	63x50	-	10 P2	✓
02060090	75x63	-	9 P2	✓
02060190	90x63	-	11 P3	✓
02060200	90x75	-	11 P3	✓
02060210	110x75	-	6 P3	✓
02060140	110x90	-	5 P3	✓

Group 02020

PP FEMALE ADAPTOR



Code	Size	Bag	Box	Stock
02020220	16x1/2"	20	500 P2	✓
02020230	16x3/4"	20	400 P2	✓
02020010	20x1/2"	20	200 P2	✓
02020020	20x3/4"	20	200 P2	✓
02020030	25x1/2"	10	140 P2	✓
02020040	25x3/4"	10	120 P2	✓
02020050	25x1"	10	120 P2	✓
02020210	32x1/2"	10	80 P2	✓
02020060	32x3/4"	10	80 P2	✓
02020070	32x1"	10	80 P2	✓
02020080	40x1"	5	60 P2	✓
02020090	40x5/4"	5	50 P2	✓
02020100	40x6/4"	5	50 P2	✓
02020110	50x6/4"	5	25 P2	✓
02020115	50x2"	5	25 P2	✓
02020120	63x6/4"	-	15 P2	✓
02020130	63x2"	-	15 P2	✓
02020140	75x2"	-	12 P2	✓
02020150	75x2 1/2"	-	12 P2	✓
02020170	90x3"	-	14 P3	✓
02020185	110x3"	-	7 P3	✓
02020200	110x4"	-	7 P3	✓



Group 02070

PP END PLUG



Code	Size	Bag	Box	Stock
02070120	16	20	480 P2	✓
02070010	20	20	320 P2	✓
02070020	25	10	140 P2	✓
02070030	32	10	120 P2	✓
02070040	40	5	70 P2	✓
02070050	50	5	30 P2	✓
02070060	63	-	20 P2	✓
02070070	75	-	15 P2	✓
02070090	90	-	9 P2	✓
02070110	110	-	5 P2	✓

Group 02040

PP FLANGED ADAPTOR



Code	Size	Bag	Box	Stock
02040010	63x2"	-	18 P3	✓
02040020	75x2 1/2"	-	4	✓
02040030	75x3"	-	8 P3	✓
02040050	90x3"	-	8 P3	✓
02040060	90x4"	-	4 P3	✓
02040080	110x4"	-	4 P3	✓

Group 02090

PP MALE ELBOW



Code	Size	Bag	Box	Stock
02090220	16x1/2"	20	400 P2	✓
02090230	16x3/4"	20	360 P2	✓
02090010	20x1/2"	20	280 P2	✓
02090020	20x3/4"	20	280 P2	✓
02090050	25x1/2"	10	120 P2	✓
02090060	25x3/4"	10	120 P2	✓
02090070	25x1"	10	120 P2	✓
02090090	32x3/4"	10	90 P2	✓
02090110	32x1"	10	80 P2	✓
02090120	40x5/4"	5	45 P2	✓
02090125	40x1"	5	45 P2	✓
02090130	50x6/4"	5	20 P2	✓
02090150	63x2"	-	20 P3	✓
02090160	75x2 1/2"	-	8 P2	✓
02090250	90x2 1/2"	-	12 P4	✓
02090180	90x3"	-	9 P3	✓
02090185	90x4"	-	8 P3	✓
02090270	110x3"	-	6 P3	✓
02090210	110x4"	-	6 P3	✓

Group 02070

PP END PLUG WITH VALVE

Operating pressure 6 bar



Code	Size	Bag	Box	Stock
02070210	20	20	300 P2	✓
02070220	25	10	120 P2	✓
02070230	32	10	120 P2	✓
02070240	40	5	70 P2	✓
02070250	50	5	30 P2	✓
02070260	63	-	20 P2	✓

Group 02030

PP COUPLING WITH O-RING

Operating pressure 10 bar



Code	Size	Bag	Box	Stock
02030020	25x1"	10	110 P2	✓
02030040	32x1"	10	80 P2	✓
02030060	40x1"	5	50 P2	✓

Group 02100

PP FEMALE ELBOW



Code	Size	Bag	Box	Stock
02100210	16x1/2"	20	400 P2	✓
02100220	16x3/4"	20	300 P2	✓
02100010	20x1/2"	20	220 P2	✓
02100030	20x3/4"	20	200 P2	✓
02100050	25x1/2"	10	120 P2	✓
02100060	25x3/4"	10	120 P2	✓
02100070	25x1"	10	100 P2	✓
02100100	32x3/4"	10	90 P2	✓
02100110	32x1"	10	80 P2	✓
02100120	40x5/4"	5	40 P2	✓
02100125	40x1"	5	40 P2	✓
02100130	50x6/4"	5	20 P2	✓
02100140	63x2"	-	20 P3	✓
02100150	75x2 1/2"	-	8 P2	✓
02100170	90x3"	-	8 P3	✓
02100205	110x3"	-	6 P3	✓
02100200	110x4"	-	5 P3	✓

Group 02110

PP WALL SUPPORT ELBOW



Code	Size	Bag	Box	Stock
02110010	20x1/2"	20	120 P2	✓
02110040	25x3/4"	10	60 P2	✓

Group 02080

PP ELBOW



Code	Size	Bag	Box	Stock
02080120	16x16	20	240 P2	✓
02080010	20x20	20	160 P2	✓
02080020	25x25	10	70 P2	✓
02080030	32x32	10	50 P2	✓
02080040	40x40	5	40 P3	✓
02080050	50x50	5	15 P2	✓
02080060	63x63	-	12 P3	✓
02080070	75x75	-	6 P2	✓
02080090	90x90	-	9 P4	✓
02080110	110x110	-	6 P4	✓

Group 02130

PP TEE COUPLING



Code	Size	Bag	Box	Stock
02130120	16x16x16	20	160 P2	✓
02130010	20x20x20	20	100 P2	✓
02130020	25x25x25	10	40 P2	✓
02130030	32x32x32	10	50 P3	✓
02130040	40x40x40	-	30 P3	✓
02130050	50x50x50	-	10 P2	✓
02130060	63x63x63	-	8 P3	✓
02130070	75x75x75	-	6 P3	✓
02130090	90x90x90	-	7 P4	✓
02130110	110x110x110	-	4 P4	✓

Group 02140

PP REDUCING TEE



Code	Size	Bag	Box	Stock
02140121	16x20x16	20	160 P2	✓
02140130	20x16x20	20	120 P2	✓
02140020	25x20x25	10	50 P2	✓
02140090	25x32x25	10	40 P2	✓
02140040	32x25x32	10	50 P3	✓
02140045	40x32x40	-	30 P3	✓
02140050	40x32x40	5	35 P3	✓
02140055	50x32x50	5	10 P2	✓
02140100	50x32x50	5	25 P3	✓
02140060	50x40x50	5	25 P3	✓
02140065	50x40x50	5	10 P2	✓
02140110	63x40x63	-	15 P3	✓
02140070	63x50x63	-	14 P3	✓
02140075	63x50x63	-	8 P3	✓
02140080	110x90x110	-	4 P4	✓

Group 02150

PP MALE TEE



Code	Size	Bag	Box	Stock
02150190	16x1/2"x16	20	200 P2	✓
02150200	16x3/4"x16	20	200 P2	✓
02150010	20x1/2"x20	20	120 P2	✓
02150020	20x3/4"x20	20	120 P2	✓
02150030	25x1/2"x25	10	60 P2	✓
02150040	25x3/4"x25	10	60 P2	✓
02150060	25x1"x25	10	60 P2	✓
02150070	32x3/4"x32	10	50 P2	✓
02150090	32x1"x32	10	40 P2	✓
02150100	40x1"x40	5	40 P3	✓
02150110	40x5/4"x40	5	35 P3	✓
02150120	50x6/4"x50	5	10 P2	✓
02150130	63x2"x63	-	12 P3	✓
02150140	75x2 1/2"x75	-	9 P3	✓
02150220	90x2 1/2"x90	-	6 P3	✓
02150160	90x3"x90	-	6 P3	✓
02150230	90x4"x90	-	6 P3	✓
02150175	110x3"x110	-	6 P4	✓
02150180	110x4"x110	-	6 P4	✓

Group 02160

PP FEMALE TEE



Code	Size	Bag	Box	Stock
02160210	16x1/2"x16	20	200 P2	✓
02160220	16x3/4"x16	20	160 P2	✓
02160010	20x1/2"x20	20	120 P2	✓
02160030	20x3/4"x20	20	100 P2	✓
02160200	25x1/2"x25	10	60 P2	✓
02160040	25x3/4"x25	10	60 P2	✓
02160060	25x1"x25	10	60 P2	✓
02160070	32x3/4"x32	10	60 P3	✓
02160090	32x1"x32	10	60 P3	✓
02160100	40x1"x40	5	40 P3	✓
02160110	40x5/4"x40	5	40 P3	✓
02160120	50x6/4"x50	5	12 P2	✓
02160130	63x2"x63	-	10 P3	✓
02160140	75x2 1/2"x75	-	8 P3	✓
02160160	90x3"x90	-	5 P3	✓
02160190	110x4"x110	-	5 P4	✓

Group 02120

PP FLANGED ELBOW



Code	Size	Bag	Box	Stock
02120010	75x2 1/2"	-	8	✓
02120020	75x3"	-	10	✓
02120035	90x3"	-	8 P4	✓
02120040	90x4"	-	5	✓
02120045	110x4"	-	6 P4	✓

Group 02170

PP FLANGED TEE



Code	Size	Bag	Box	Stock
02170010	75x2 1/2"	-	5	✓
02170020	75x3"	-	5	✓
02170035	90x3"	-	6 P4	✓
02170040	90x4"	-	4	✓
02170045	110x4"	-	4 P4	✓

Group 02010

PP MALE ADAPTOR (LONG THREAD)



Code	Size	Bag	Box	Stock
02010340	50x6/4"	5	30 P2	✓

Group 02020

PP FEMALE ADAPTOR (LONG THREAD)



Code	Size	Bag	Box	Stock
02020240	50x6/4"	5	25 P2	✓

Group 02300

NUT



Code	Size	Bag	Box	Stock
02300660	16	-	600 P2	✓
02300200	20	-	600 P2	✓
02300220	25	-	250 P2	✓
02300240	32	-	180 P2	✓
02300260	40	-	245 P3	✓
02300280	50	-	120 P3	✓
02300300	63	-	60 P3	✓
02300440	75	-	1	✓
02300590	90	-	1	✓
02300600	110	-	1	✓

Group 02300

CLINCHING RING



Code	Size	Bag	Box	Stock
02300670	16	-	1	✓
02300110	20	-	1	✓
02300120	25	-	1	✓
02300130	32	-	1	✓
02300140	40	-	1	✓
02300150	50	-	1	✓
02300160	63	-	1	✓
02300170	75	-	1	✓
02300610	90	-	1	✓
02300620	110	-	1	✓

Group 02300

THRUST RING



Code	Size	Bag	Box	Stock
02300680	16	-	1	✓
02300020	20	-	1	✓
02300030	25	-	1	✓
02300040	32	-	1	✓
02300050	40	-	1	✓
02300060	50	-	1	✓
02300070	63	-	1	✓
02300080	75	-	1	✓
02300570	90	-	1	✓
02300580	110	-	1	✓

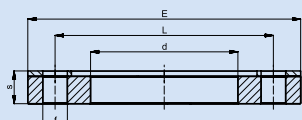
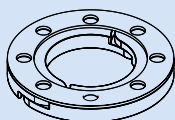
Group 02300

O RING - GASKET



Code	Size	Bag	Box	Stock
02300690	16	10	1	✓
02300320	20	10	1	✓
02300330	25	10	1	✓
02300350	32	10	1	✓
02300360	40	10	1	✓
02300370	50	10	1	✓
02300380	63	10	1	✓
02300390	75	10	1	✓
18000080	90	5	1	✓
18000090	110	5	1	✓

Flange



DN	Ø	E	d	L	f	s	Number of Holes
80	3"	200	108	160	18	24	8
100	4"	225	133	185	18	29	8

ASSEMBLING INSTRUCTIONS

Assembling instruction for fittings Ø16 - Ø40 mm



1 Limber up the nut, but do not remove it completely.



2 Insert the pipe into the fitting. Make sure that the pipe crossed the O ring - gasket.

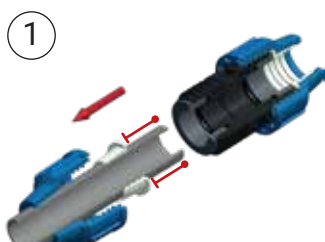


3 Fully coil back the nut.

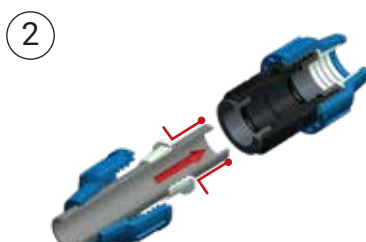


4 Assembled PP fitting.

Assembling instruction for fittings Ø50 - Ø110 mm



1 Pull up the nut, the clinching ring, the thrust ring, and O-ring on the pipe.



2 Put together the pipe, O-ring, and thrust ring into the body. Push the pipe until the internal register is inside a fitting. Make sure that O-ring and thrust ring are in their original position.

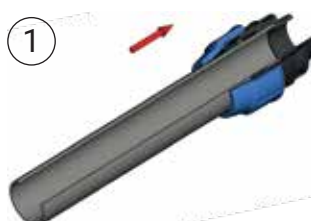


3 Pull back the clinching ring to its original position.

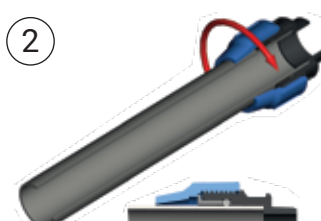


4 Pull back the nut and fully coil it up to the fitting.

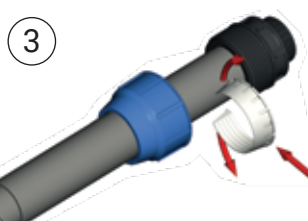
Proposal for easier installation for fittings Ø90 - Ø110 mm



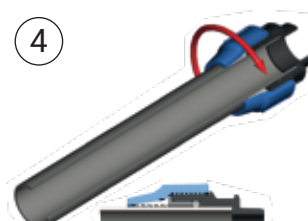
1 Pull up the nut, the clinching ring, the thrust ring, and O-ring on the pipe.



2 Place the pipe into the body of the fitting. O-ring and thrust ring are pushed into place, fully winding the nut.



3 Uncoil the nut, then stretch the clinching ring and place it into the pipe right next to the thrust ring.



4 Pull back the clinching ring to its original position.

IMPORTANT

- The end of the pipe has to be chamfered and cleaned from chips.
- From Ø20 mm to Ø40 mm is enough to coil the nut by hand.
- If the nut is not fixed completely, there can be dripping or flowing at the O ring-gasket or the pressure can set off the pipe from the fitting.
- The threaded end of the PP fitting has to be covered with PTFE (polytetrafluoroethylene) tape or braid.
- The threaded end of PP fitting has to be coiled in completely (useful thread length).
- Above 50 mm diameter, a wrench or tool has to be used to reach the perfect bonding.

- Torque values for tightening nut:

DN	16	20	25	32	40	50	63	75	90	110
Nm	6.5	8	15	18	28	40	65	110	140	240

- Fittings Ø90 - 110 mm:
 - Position the pipe app 5 mm from the internal register, while tightening the nut, it will push together the clinching ring thrust ring, O-ring, and the pipe to the right position.
 - Tighten the nut and make sure that the nut exceeds the last thread of the body, until a 1 - 2 mm gap is left next to the fitting edge.